

Class Work

Topic- Human Circulatory System

Answer sheet

Instruction:

- The answer hints are provided here. Elaborate according to marks.

1. What is the correct path through the circulatory system which describes the passage of blood originating in the left leg?

- A. Vena cava → left atrium → right atrium → lungs → left ventricle → right ventricle → aorta
B. Vena cava → right atrium → left atrium → lungs → right ventricle → left ventricle → aorta
C. Vena cava → left atrium → left ventricle → lungs → right atrium → right ventricle → aorta
-

- **D. Vena cava → right atrium → right ventricle → lungs → left atrium → left ventricle → aorta**
-

2. Which of the following can best be compared to soldiers?

- A. Lung B. Capillaries C. RBC D. **WBC**



3. What part of the blood carries minerals, vitamins, sugar, and other foods to the body's cells?

- A. **Plasma** B. Platelets c. RBC D. WBC

4. All blood cells are produced in

- A. Bone B. **Bone marrow** C. Heart D. Capillaries

Choose any one option

1. Both A and R are true and R is the correct explanation of A.

2. Both A and R are true but R is not the correct explanation of A.
3. A is true but R is false.
4. A is false but R is true.
5. Both A and R are false.

5. A: Lymph is a colourless fluid containing specialised lymphocytes which are responsible for the immune response of body.

R: Lymph is an important carrier for nutrient, hormones etc.

Ans Hint. 2

6. Why is it necessary to separate oxygenated and deoxygenated blood in human?
 Ans Hint. To make the system more efficient and to maintain the body temperature.

7. Explain double circulation in human blood with a clear diagram.
 Ans Hint. Systemic and pulmonary circulation explanation needed.

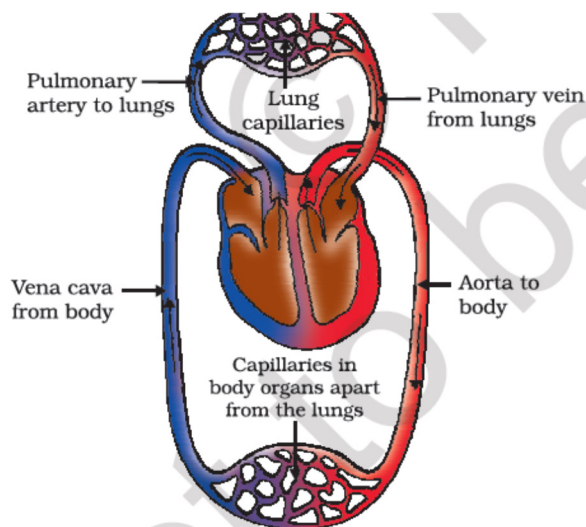
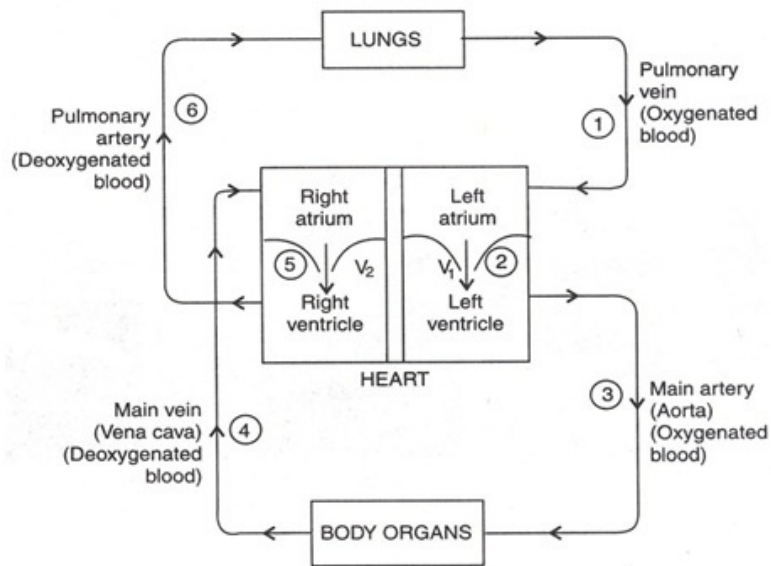


Figure 6.11
 Schematic representation of transport and exchange
 of oxygen and carbon dioxide

passage through the



8. How do doctors detect a patient of hypertension with sphygmomanometer?
 Ans Hint. If the systolic by diastolic pressure is more than 120/80 then doctors consider him/ her as a hypertension patient.
9. Differentiate between (Enumerate with tabular form)
- Blood and lymph
 - Artery and vein
- Ans Hint. a. Blood is red coloured fluid with RBC, WBC, Platelet, plasma
 Lymph is colourless and only with WBC and watery fluid
- b. Artery carries oxygen and thick walled; Vein carries more CO_2 and thin walled with valves.
10. What would be the consequences of a deficiency of haemoglobin in our bodies?
 Ans Hint. It affect the oxygen supply capacity of blood and also can lead to anaemia.