



CH6: FUN WITH GIVE AND TAKE

WS61

MATHS COPY 1

DATE: 9/8/21

A) What will come in place of question mark?

1) $234 - ? = 150$

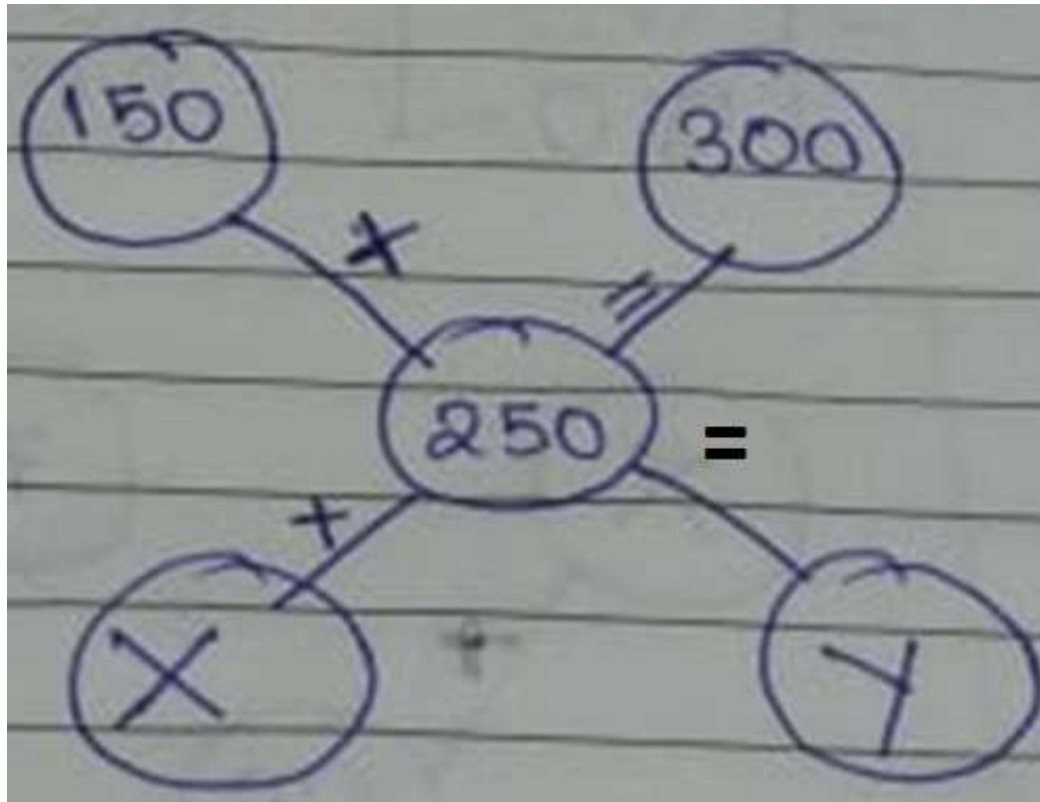
2) $356 + ? = 600$

B) SUBTRACT AND CHECK YOUR ANSWER:

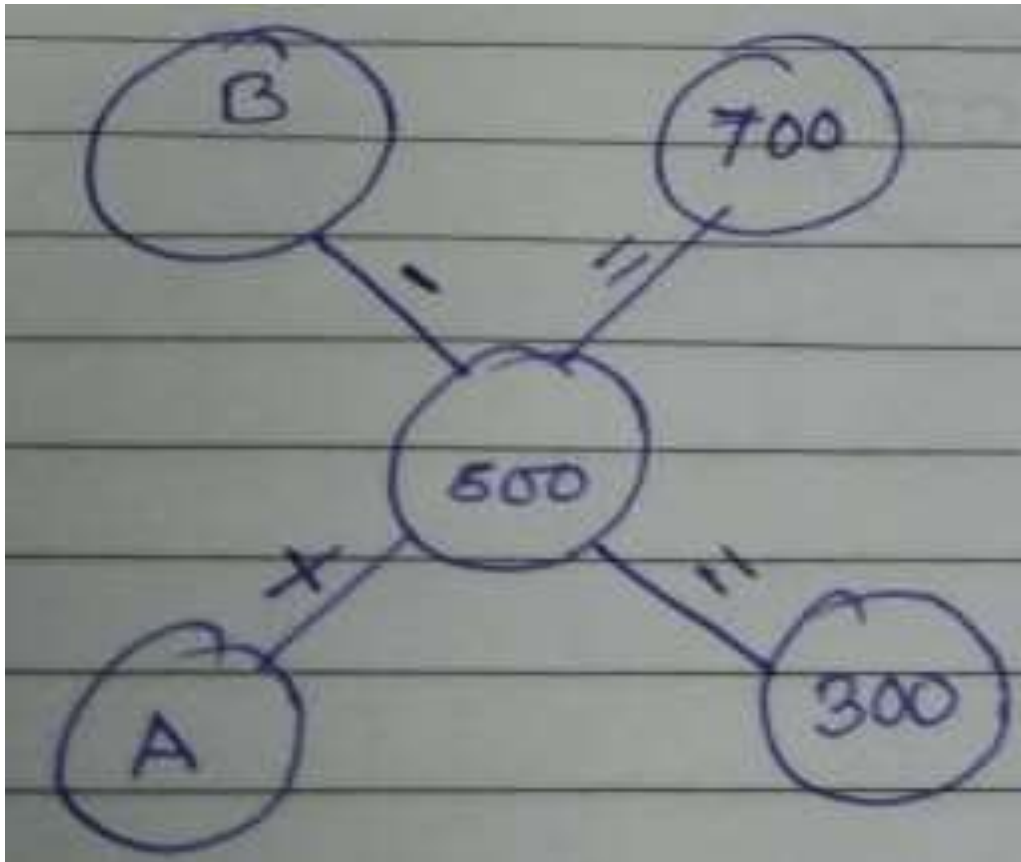
3) $5678 - 2341$

4) $4500 - 3546$

5) FIND THE VALUE OF X AND Y:



6) FIND THE VALUE OF A AND B:



A) What will come in place of question mark?

234 - ? = 150

[ANS: 84]

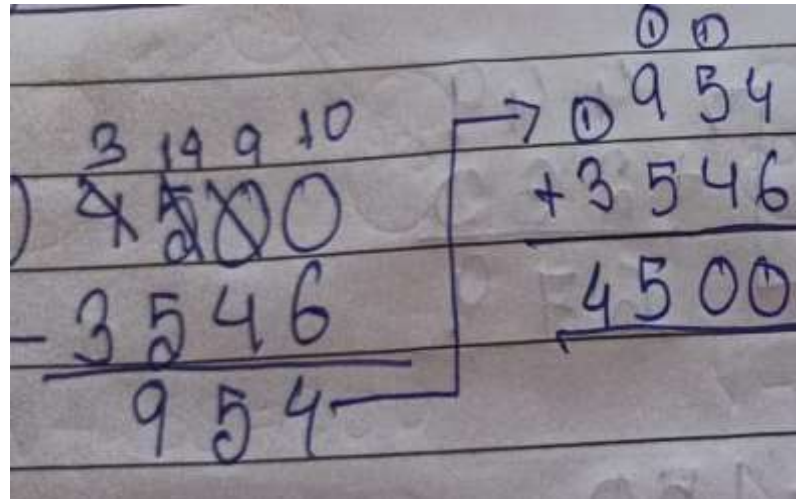
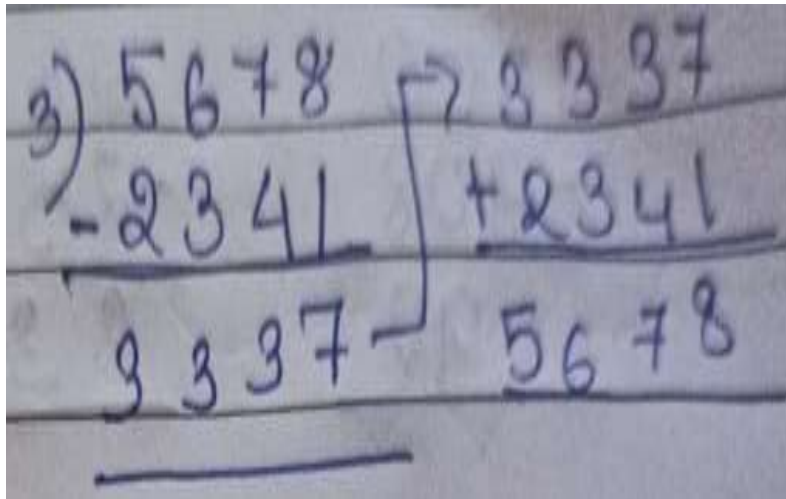
2) 356 + ? = 600

[ANS: 244]

B) SUBTRACT AND CHECK YOUR ANSWER:

3) 5678 - 2341

4) 4500 - 3546

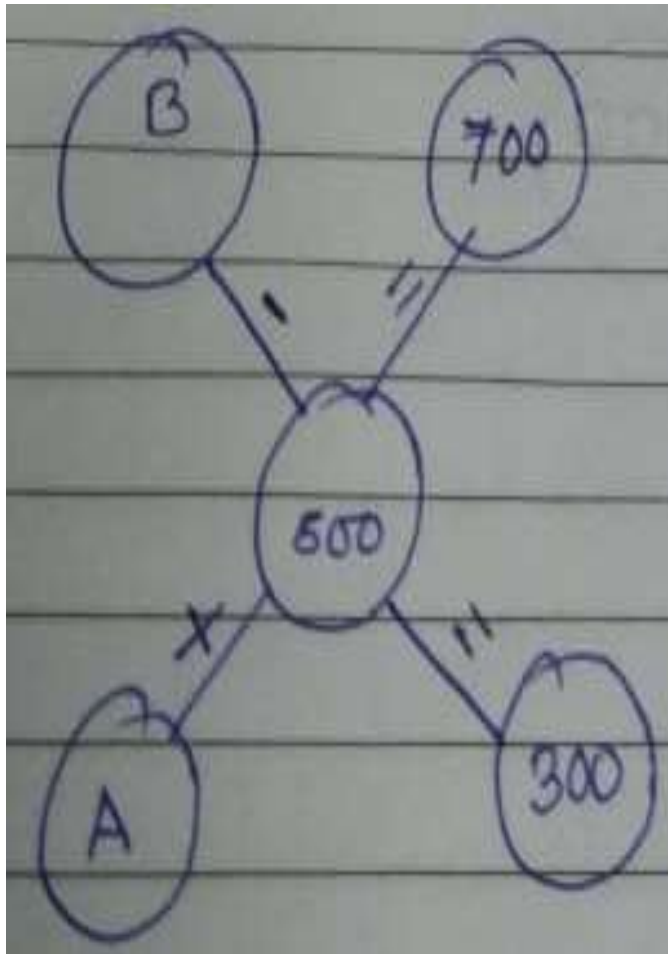


5) FIND THE VALUE OF X AND Y:

The diagram shows a central circle containing the number 250. To its left, a circle contains 150, with an arrow pointing to the 250 and a plus sign (+). To its right, a circle contains 300, with an arrow pointing to the 250 and an equals sign (=). Below the 250, a circle contains X, with an arrow pointing to the 250 and a plus sign (+). To the right of the X circle, another circle contains Y, with an arrow pointing to the 250 and a plus sign (+). To the right of the diagram, handwritten calculations are shown:

$$\begin{array}{r} X + 250 = 300 \\ 300 \\ - 250 \\ \hline 50 \\ \therefore X = 50 \end{array}$$
$$\begin{array}{l} 150 + 250 = Y \\ \therefore 150 + 250 = 400 \\ \therefore Y = 400 \end{array}$$

6) FIND THE VALUE OF A AND B:



$$\begin{array}{r} A + 500 = 700 \\ 700 \\ - 500 \\ \hline 200 \\ A = 200 \end{array}$$

$$\begin{array}{r} B - 500 = 800 \\ 500 \\ + 800 \\ \hline 800 \\ \hline \end{array} \quad \therefore B = 800$$



THANK YOU