

Solution/Hints of chapter 11 The valley of Flowers
(14.08.2020)

- Q1** **A. Lotus, waterlily**
 B. Night queen, jasmine
 C. Sunflower, lotus

Q2 . Madhubani is a very old form of folk art of Madhubani district in Bihar .

Q3. Madhubani painting are made out of paste of powdered rice in which colour has been mixed. The colours used in these painting are very special as they are natural colours extracted from turmeric, indigo, colours from various flowers and trees etc.

Q 4

Flower

Bud

1. Flower is a part of plant that contains Reproductive organs .

1. Bud is the elementary (primary) stage of Flower.

2. A flowers is surrounded by petals .

2. A bud is surrounded by sepals.

3. A flower is large in size and it bloom from a bud.

3. A bud is pointed and smaller in size with the Petals enclosed in sepals.

Q5. Write names of some Flowers with medicinal qualities.

Rose- It contains vitamin C . The petals can be eaten raw to increase blood circulation.

Lotus: It is effective against diarrhoea , fever and Cholera.

Marigold: It can be used on skin to heal burns and cuts.

Q6. Write names of some edible flowers how are these flowers eaten?

Names of some edible flowers are Kachnar flowers , banana flowers sahjan flowers etc.

These Flowers are either cooked as a dry vegetable or as a gravy dish or as a chutney for eating.

Q7.What is Itr?

Itr is a type of natural perfume extracted from Flowers, herbs, spices,barks of tree etc.

Q8.What is horticulture?

The cultivations of fruits , flowers and vegetables is called horticulture.

Many horticulture crops are grown in India such as

Fruits -Apple, pineapple ,Orange, litchi etc.

Flowers- Jasmine,rose , marigold, tulip etc.

Vegetables- Cabbage,potatoes ,peas etc.

Q9. Diagram (practice)

Structure of a Flower

Stamens

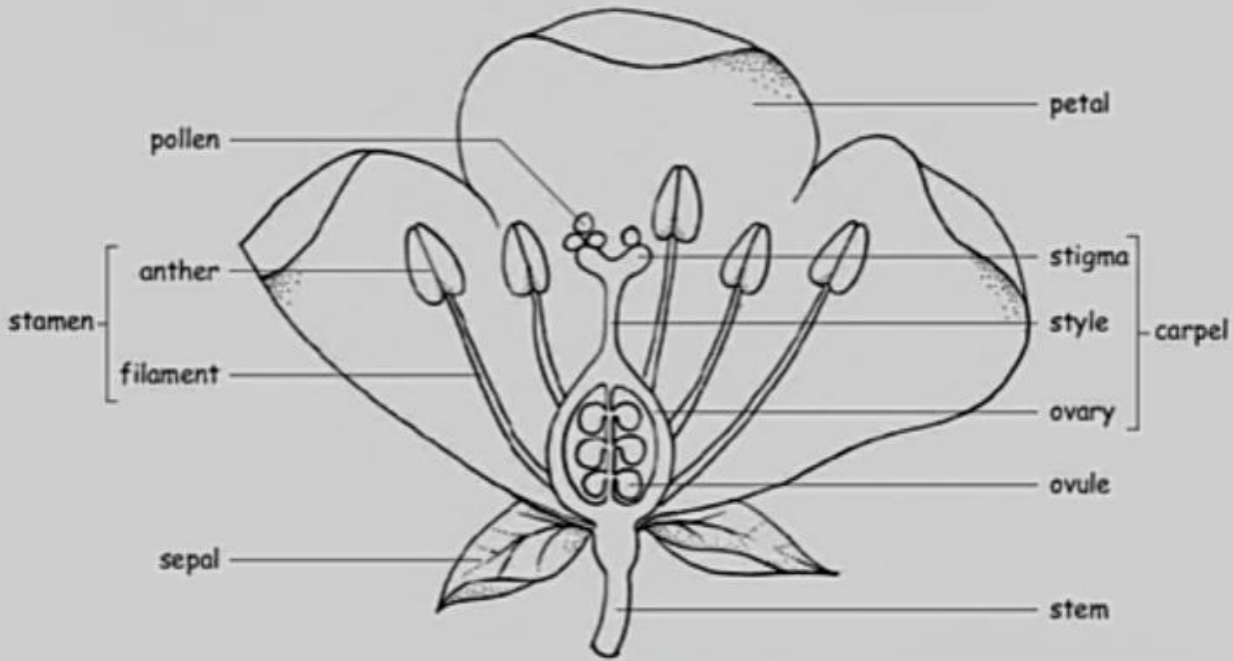
Anther

Pollens are male reproductive cells

Filament



parts of flower



Structure of a Flower

Fourth whorl: Carpel or Pistil

