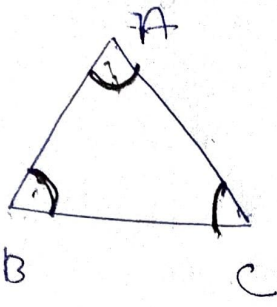


Triangles

5



A triangle is a closed figure bounded by three line segments.

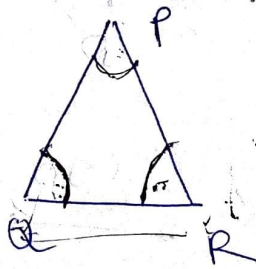
Parts of a triangle

<u>Part</u>	<u>Number</u>	<u>Name</u>
Sides	3	AB, BC, CA
Vertices	3	A, B, C
Angles	3	$\angle A, \angle B, \angle C$

Classification of Triangles

(A) On the basis of lengths of sides

i) Equilateral Triangle :- A triangle whose 3 sides are equal is called an equilateral triangle.



$$PQ = QR = RP$$

$$\angle P = \angle Q = \angle R$$

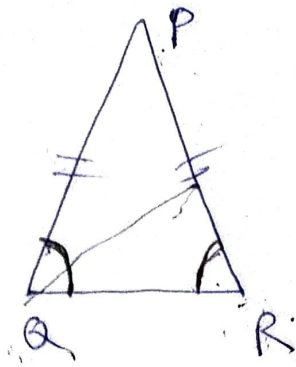
$$\angle = 60^\circ$$

ii) Isosceles Triangle :- A triangle whose two sides are equal is called an

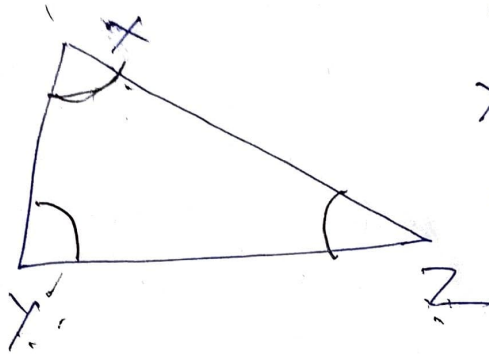
isosceles triangle.

$$PQ = PR$$

$$\angle R = \angle Q$$



(iii) Scalene Triangle :- A triangle which has 3 unequal sides ~~are~~ ~~sq~~ is called a scalene triangle



$$XY \neq YZ \neq ZX$$

$$\angle X \neq \angle Y \neq \angle Z$$