

SATISH CHANDRA MEMORIAL SCHOOL CHAKDAH

CLASS IV. EVS. (ACTIVITY)

Do the below mentioned work in EVS Activity notebook

(Write on the ruled side of the page and draw on the white side of the page)

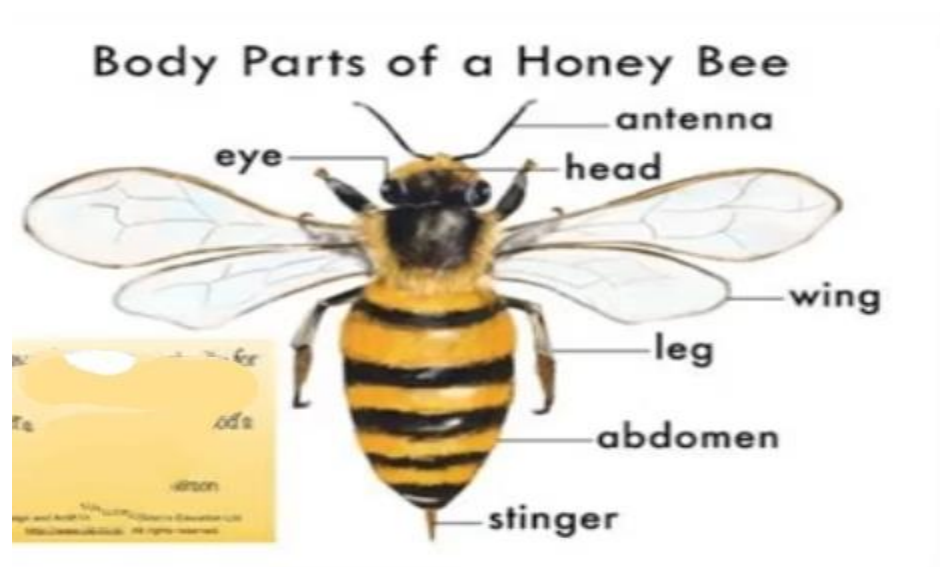
LIFE CYCLE OF HONEYBEES

HONEY BEE :- Honey bees are flying insects and close relatives of **WASP** and **ANTS**.

There are different type of bees :- Honey bees, Bumble bees, Mason, Leaf cutter, Carpenter bees, etc.

Parts of a Honey bee:-

- . Bees have a long straw like tongue.**
- . They have two wings, two antennae and three segmented body parts- Head, Thorax and Abdomen**



Types of Honey bee:-

QUEEN BEE

- **THERE IS ONLY ONE QUEEN BEE IN EVERY HIVE.**
- **SHE LAYS EGGS.**
- **QUEEN BEE IS ACTUALLY THE MOTHER OF EVERY OTHER BEE.**

DRONE BEE

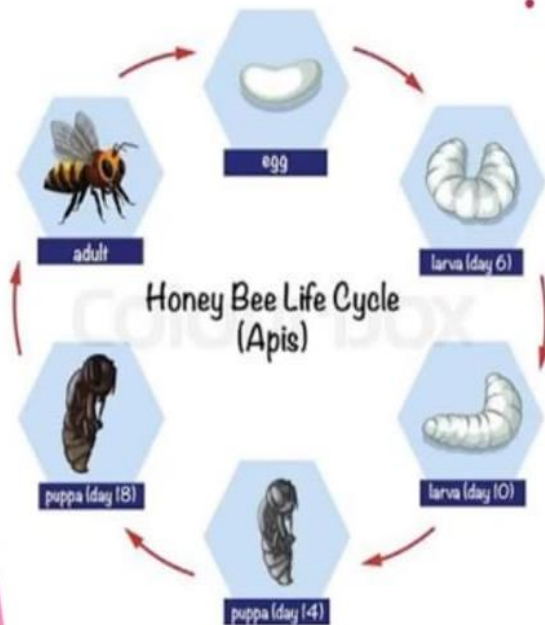
- **THEY ARE THE MALE BEES.**
- **THEY BASICALLY DONOT HAVE ANY WORK TO DO IN THE HIVE.**
- **THEY HELP IN REPRODUCTION OF BEES.**

WORKER BEES

- **THEY MAKE UP THE MAJORITY OF EACH COLONY'S POPULATION.**
- **WORKER BEES ARE FEMALES.**
- **THEY DO ALMOST EVERYTHING LIKE- FEEDING THE BABY BEES, TENDING THE QUEEN, CLEANING THE HIVE, COLLECTING NECTAR, GUARDING THE COLONY, BUILDING THE HONEYCOMB.**

Life cycle of a honey bee:-

LIFE CYCLE OF HONEY BEE



- **HONEY BEES DEVELOP IN FOUR DIFFERENT LIFE CYCLE PHASES- EGG, LARVAE, PUPA AND ADULT.**

- **THE LIFE CYCLE OF HONEY BEE RANGES FROM 16-24 DAYS.**

- **QUEEN BEE TAKES 16 DAYS.**
- **WORKER BEES TAKE 21 DAYS.**
- **DRONE BEES TAKE 24 DAYS.**